

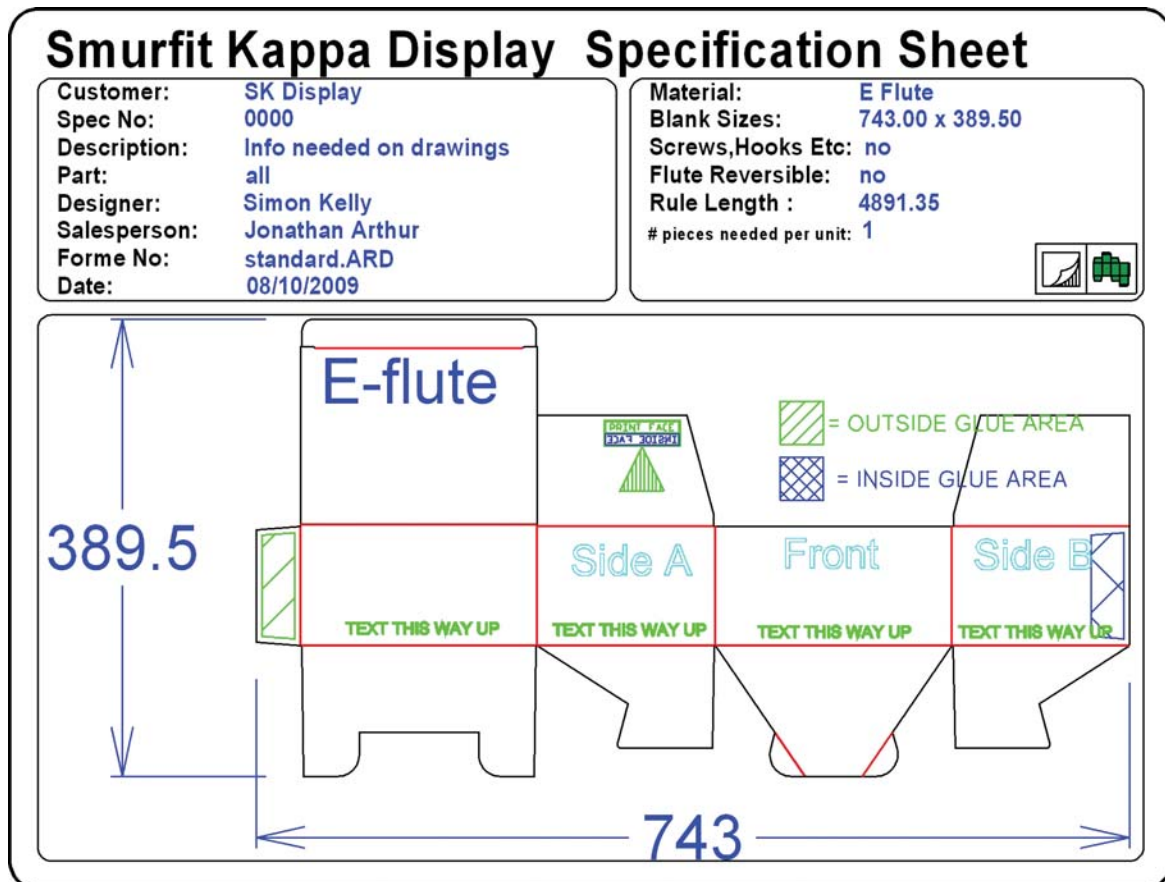
Criteria For Keyline Files Being Supplied

The following criteria are required when supplying Keyline files to Smurfit Kappa Display.

Keylines:

- The Keyline files should be Artios CAD format or EPS format
- All supplied Keylines must have specified dimensions
- Paper Grain/ Board Fluting direction must be clearly shown
- Material grade and thickness should also be specified
- The inside gluing area and the outside gluing area are to be marked as follows
 - Green hatch for print side glue area. Blue cross hatch for inside glue area
- Special line types are to be described

Sample Drawing: Keyline Format



Any queries, please contact your Smurfit Kappa Display Sales Representative on 01- 4524333.